

RESOLUTION NO. 25-02

A RESOLUTION OF THE BOARD OF SUPERVISORS OF THE EMERALD HILLS SAFETY ENHANCEMENT DISTRICT, DETERMINING, ORDERING AND LEVYING THE ASSESSMENT FOR THE EMERALD HILLS SAFETY ENHANCEMENT DISTRICT FOR THE FISCAL YEAR 2025-2026 COMMENCING OCTOBER 1, 2025 AND ENDING SEPTEMBER 30, 2026; APPROVING THE RATE OF ASSESSMENT; APPROVING THE ASSESSMENT ROLL; AND PROVIDING FOR AN EFFECTIVE DATE.

WHEREAS, the Emerald Hills Safety Enhancement District (“District”) was duly created and empowered by the City of Hollywood, pursuant to Ordinance No. 2017-13 (“Ordinance”), and therein given the authority, to levy non-ad valorem assessments on the lots and parcels within its geographic boundaries, up to \$250 per parcel, per year; and

WHEREAS, the Ordinance authorizes levy and collection of non-ad valorem assessments for the purpose of funding community policing initiatives within the District’s geographic boundaries, up to \$250 per year; and

WHEREAS, on February 21, 2018, the District passed the Original Intent Resolution, Resolution No. 18-01, which declared the intent to impose non-ad valorem assessments to the District area on the tax bill; and

WHEREAS, on July 8, 2025, the District passed Resolution No. 25-01, setting the date, time and place at which public hearings will be held to consider the District’s budget and final assessment rate; and

WHEREAS, a public hearing determining, ordering and levying the assessments for the District was held at 6:00pm on Monday, September 15, 2025, at Driftwood Community Center, 3000 N. 69th Avenue, Hollywood, Florida; and

WHEREAS, notice of this public hearing has been published in the newspaper and mailed, which provides notice to all interested persons of an opportunity to be heard as required by law.

NOW THEREFORE, BE IT RESOLVED, by the Board as follows:

Section 1. The foregoing “Whereas” clauses are true and correct and hereby ratified and confirmed by the Board.

Section 2. The District will continue to use the uniform method of collecting non-ad valorem assessments authorized in Section 197.3632, Florida Statutes. A map of the area subject to the assessment is attached as Exhibit “A,” and incorporated herein and referenced thereto.

Section 3. The Emerald Hills Safety Enhancement District’s assessments, in the amount of \$250 per year, as contained in Exhibit “B,” are approved for the 2025/2026 Fiscal Year commencing October 1, 2025 and ending September 30, 2026 and deemed necessary for the purposes of funding community policing initiatives within the District’s boundaries.

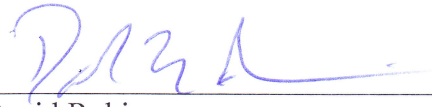
Section 4. The assessment for each parcel will be included on the assessment rolls by the Broward County Property Appraiser’s Office and will be billed and collected through the Broward County Revenue Collections Division, as authorized in Section 197.3632, Florida Statutes. The Florida Statutes requires the following disclosure to owners, “Failure to pay the assessments will cause a Tax Certificate to be issued against the property which may result in the loss of title.”

Section 5. The District adopts and certifies the Non Ad-Valorem Final Assessment Roll as presented at the time of the Public Hearing on September 15, 2025.

Section 6. The Secretary or designee is directed to send a copy of this Resolution and the Assessment Roll on appropriate electronic media to the Broward County Property Appraiser so that the total assessment hereby levied can be entered on the county tax rolls by the Appraiser and collected by the Broward County Revenue Collector.

Section 7. This Resolution shall become effective upon passage.

Passed and adopted this 15th day of September 2025.



David Rubin
Chair, Board of Supervisors

Attest:



Andrew Cagnetta
Secretary, Board of Supervisors

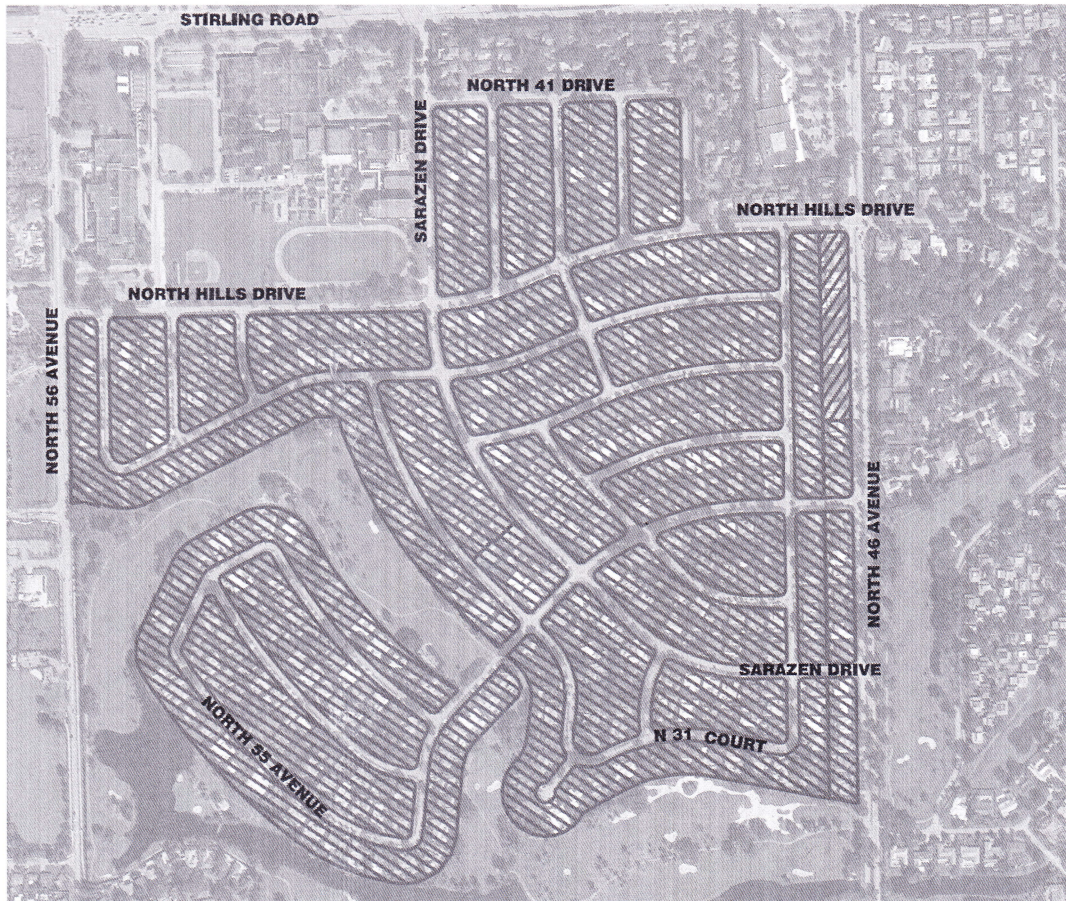
Approved as to form and legality
for the use of and reliance by the
Emerald Hills Safety Enhancement
District only:



Weiss Serota Helfman Cole & Bierman, P.L.
Attorney, Board of Supervisors

EXHIBIT "A"

LOCATION MAP
THIS IS NOT A FIELD SURVEY
BROWARD COUNTY, FLORIDA
SEC. 6, TWP. 51S, RANGE 42E



= AREA OF ZONING ASSESSMENT



Land Surveying Services Inc.

JOB #16-10-010LM

EXHIBIT "B"

EMERALD HILLS SAFETY ENHANCEMENT DISTRICT FINAL RATE ASSESSMENT

The final non-ad valorem assessment rate for the Emerald Hills Safety Enhancement District for Fiscal Year 2025-2026 is: **\$250.00 per parcel.**

This rate is the maximum amount that can be assessed per parcel per year.